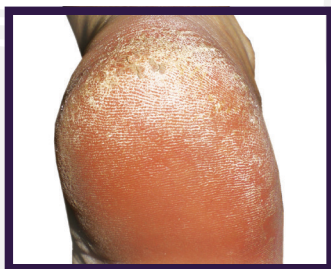


# REVITADERM<sup>®</sup>40

## KERATOLYTIC EMOLLIENT



Before



After

# TOUGH ON CALLUSED DRY SKIN



- Utilizes 40% Urea to help soften hardened skin that results from callus buildup
- Works great on feet, heel fissures and other dry, rough or callused skin
- Comes with a Free Pumice Stone and Brush

